



*Great  
Ocean  
Road*

# **WARRNAMBOOL EVENTS VENUE GUIDE**



## OPTIONS FOR GETTING HERE?

Warrnambool is easily accessible via car, train or bus.

**CAR:** Warrnambool is 257 kilometers away from Melbourne CBD and will take approximately 3hrs to drive via the inland route or 5hrs and 30 mins via the Great Ocean Road.

**TRAIN:** VLine Train departs Southern Cross Station for Warrnambool 3 times per day.

 [www.vline.com.au](http://www.vline.com.au)

**BUS:** VLine operate from Melbourne to Mt Gambier.

 [www.vline.com.au](http://www.vline.com.au)

# GETTING TO WARRNAMBOOL:

Enjoy everything Warrnambool has to offer from dramatic beaches, historic buildings and a vibrant CBD. It makes for a great day trip destination for your conference or event or why not an extended stay.

# WHAT'S ON IN WARRNAMBOOL?

## Events

The Events and Promotion Branch supports and produces events which contribute to the local economy and build the profile of Warrnambool as a vibrant regional City.

There is something on offer year round in Warrnambool. Significant events on the Calendar include:

- Grand Annual Sprintcar Speedway Classic
- BeachFest & Summer Events Program
- May Racing Carnival
- Wunta Fiesta
- Melbourne to Warrnambool Cycling Classic
- Sport Carnivals (many and varied)

## Event Assistance

Council's Events and Promotion Branch can provide assistance with planning your event by:

- Sourcing and coordinating venue proposals
- Assisting and advising organisers and stakeholders on event management, permits and planning
- Coordination of site inspections and familiarisations for event decision makers
- Providing options and referrals on local businesses, activities and entertainment
- Assist with booking Council venues
- Promote your event on various marketing channels to enhance awareness and visitation



**For further information on event planning and assistance including applying to host an event in Warrnambool [www.warrnambool.vic.gov.au/event-planning-assistance](http://www.warrnambool.vic.gov.au/event-planning-assistance)**



# MEETINGS, CONFERENCES & BUSINESS EVENTS

Whatever your requirements, Warrnambool has it covered!

We can cater for up to 1,500 delegates and spaces range from intimate rooms through to auditorium seating. From the historic setting of Flagstaff Hill, beachside setting of Lady Bay Resort or The Pavilion through to the comfort and convenience of South West TAFE or The Lighthouse Theatre there really is a location to suit all requirements.

Let us assist with organising a package including familiarisation tours or simply provide advice on the best venue to suit your needs.



## I AM WARRNAMBOOL

Some options for Familiarisation Tours may include:  
**These are examples and can be tailored to your needs.**

### TOUR 1 – The nature lover

- Whale watching a Logans Beach Whale Platform
- Hopkins Falls
- Hopkins River Mouth and Moyjil (Historic site of Indigenous significance)
- Indigenous culture and nature walk at Tower Hill Nature Reserve (Tourism Awards Hall of Fame Winner in 2018)
- Meet the Maremma Tour at Middle Island (made famous by the movie 'Oddball')



### TOUR 2 – A taste of the Great Ocean Road & shipwreck history

- Twelve Apostles (optional helicopter tours)
- Gibson Steps, London Bridge and Loch Ard Gorge (shipwreck history)
- G.O.R.G.E Chocolates
- Timboon and Gourmet Trail
- Fletcher Jones Gardens & Car Museum
- Flagstaff Hill Maritime Museum & Village and Sound and Light Show



### TOUR 3 – City with soul & wellness experiences

- Deep Blue geothermal pools
- Street Art Tour
- Active adventure - Cycling and walking trails
- Lake Pertobe Adventure Playground
- Shopping in the recently renewed CBD
- Live Music CBD tour
- Warrnambool Art Gallery

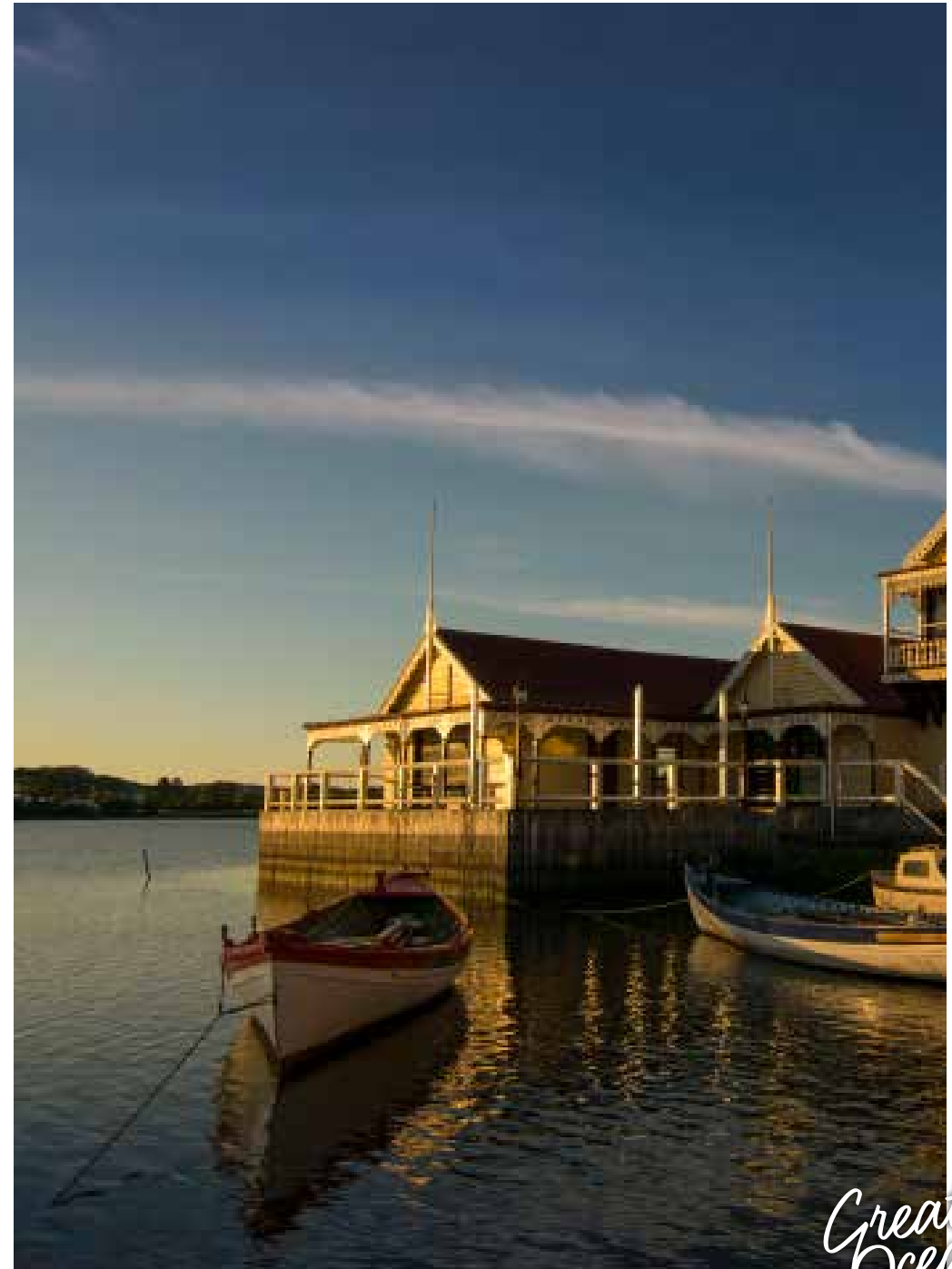




# OUR VENUES

---

- Archie Graham Community Centre
- Best Western Olde Maritime Motor Inn
- Brother Fox Catering and Events
- City Memorial Bowls Club
- Deakin University
- Emmanuel College
- Flagstaff Hill
- Flying Horse Bar & Brewery
- Hotel Warrnambool
- Images Restaurant
- Lady Bay Resort
- Lighthouse Theatre
- Mid City Warrnambool
- Proudfoot's Boathouse
- Quest Warrnambool
- Rafferty's Tavern
- Simons Waterfont
- South West TAFE
- The Cally Hotel
- The Stage - Emmanuel College
- The Pavillion
- The Whalers Hotel
- Warrnambool Art Gallery
- Warrnambool Bowls Club
- Warrnambool Football Club
- Warrnambool Golf Club
- Warrnambool Greyhound Racing Club
- Warrnambool Racing Club
- Warrnambool Stadium



# ARCHIE GRAHAM COMMUNITY CENTRE

118-130 Timor Street, Warrnambool  
 03 5559 4920  
 agccustserv@warrnambool.vic.gov.au  
 www.warrnambool.vic.gov.au/facility-information

The Archie Graham Community Centre has a variety of rooms of various sizes that can be used for community activities and meetings. The rooms include a recreation room suited for anything from forums to group exercises as well as smaller rooms for meetings and indoor activities. The centre is located centrally within the Warrnambool CBD within easy walking distance to all amenities.

ROOM	THEATRE	BANQUET
Meeting Room	40	40
Dining Room	120	120
Recreation Room	160	
Meeting Room (SM)	60	40

**KEY FEATURES:** On site catering, AV, kitchenettes, affordable rates



# BEST WESTERN OLDE MARITIME MOTOR INN

📍 Cnr Banyan & Merri Street, Warrnambool

☎ 03 5561 1415

✉ info@oldemaritime.com.au

🌐 www.oldemaritime.com.au

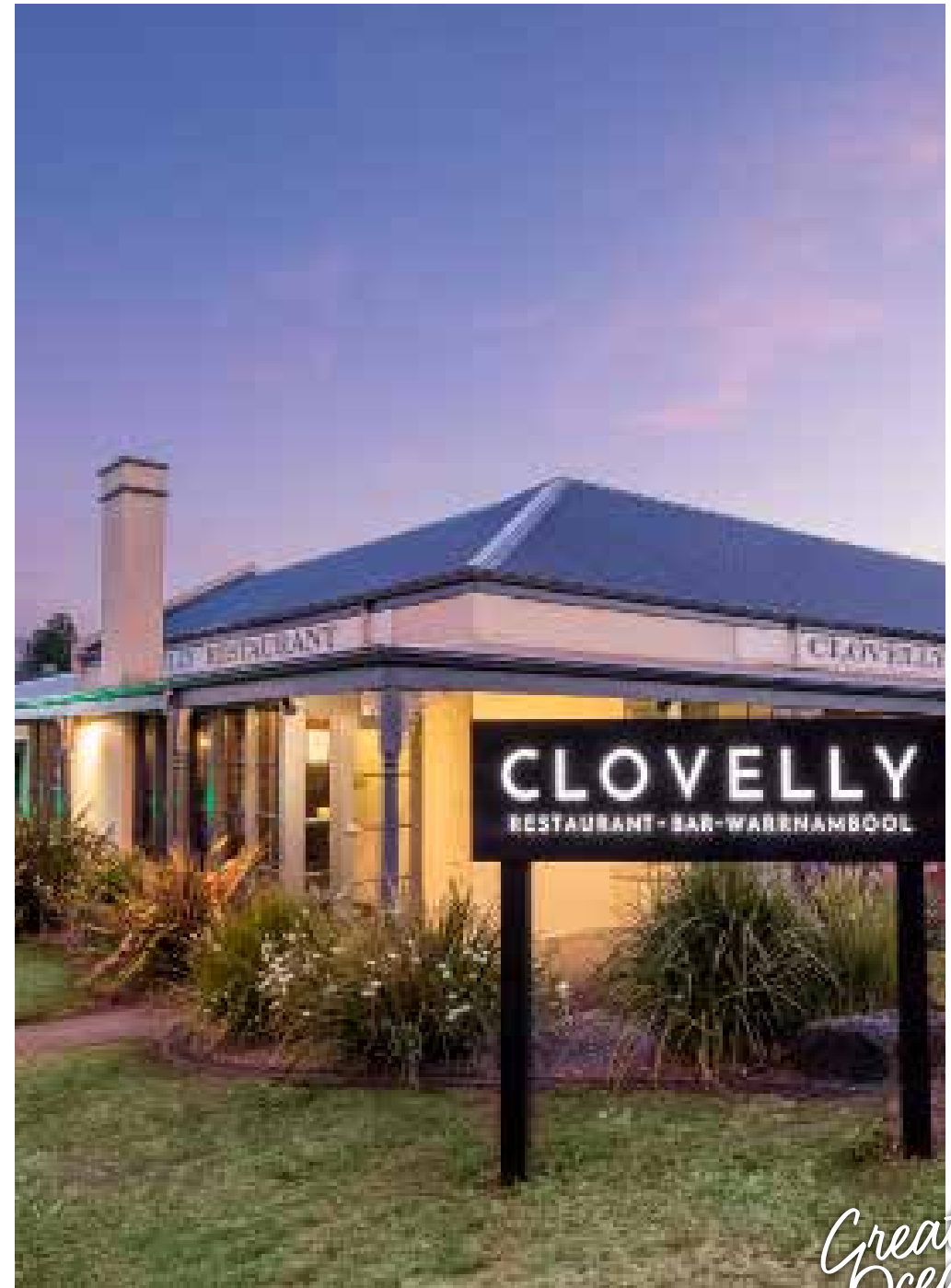
Located centrally opposite Flagstaff Hill Maritime Museum and within a five minute walk to Lake Pertobe, Main Beach and the CBD the Best Western Olde Maritime is perfect for accommodation, dining and functions. The accommodating team here will assist you with any special requests and help to make your function or stay a special one.

ROOM	THEATRE	BANQUET	COCKTAIL
Clovelly Restaurant & Bar	-	90	180

📱 /bwoldemaritime    📷 bwoldemaritime

**MAX PEOPLE:** 180

**KEY FEATURES:** 37 rooms, relaxed restaurant, free parking, dance floor, gym



# BROTHER FOX CATERING AND EVENTS

📍 Deakin University Princes Hwy, Warrnambool

☎ 0438 682 160

✉ brotherfox@deakin.edu.au

🌐 food.deakin.edu.au/wb/service/brother-fox

At Brother Fox we understand that every event is unique, that is why we offer a range of flexible catering options that are at competitive and affordable rates to make your function a unique and memorable occasion. Brother Fox are happy to work with you to make your function or occasion one that suits. This venue is located in a picturesque setting with views over the Hopkins River. Being one of the largest venues in Warrnambool with excellent food and amenities it makes for a great conference or function venue.

ROOM:	THEATRE SEATING	BANQUET SEATING	COCKTAIL (STANDING)
Fox West/East	400	350	500
Fox West	200	150	250
Fox Meeting	35	25	45
Fox Bar	100	80	130

f /BrotherFoxCafeteriaEvents

**MAX PEOPLE:** 500

**KEY FEATURES:** Full onsite catering, AV available, accommodation on site at Deakin University





# THE CALLY HOTEL

📍 112 Fairy Street, Warrnambool

☎ 03 5561 3932

✉ [ilucas@callyhotel.com.au](mailto:ilucas@callyhotel.com.au)

🌐 [www.callyhotel.com.au](http://www.callyhotel.com.au)

Centrally located in the heart of Warrnambool, The Cally Hotel is perfectly situated for your next event. Whether it is a conference, wedding or anything in between, The Cally can take care of everything.



# CITY MEMORIAL BOWLS CLUB

📍 50-58 Cramer Street, Warrnambool

☎ 03 5561 4155

✉ info@citybowlsclub.com.au

🌐 www.citybowlsclub.com.au

The Carmichael at City Memorial Bowls Club is Warrnambool's new star of reception venues. The room is a great blank canvas for weddings and functions of up to 350, or alternatively the room can be divided off for smaller groups. The chefs can offer range of menus and prices. With plenty of car parking and only just five minute walk from the Warrnambool CBD it is a great location for your next function!

ROOM	THEATRE	BANQUET	COCKTAIL
Carmichael Room	400	350	400
Board Room	16	14	
Members Bar	150	150	300
Bistro	200	200	200
Starlight Café		50	
Alfresco Area		150	200

f /citybowlsclub    📷 citybowlsclub

**MAX PEOPLE:** 400

**KEY FEATURES:** AV, stage, ample parking, use of bowling greens including package deals.



# DEAKIN UNIVERSITY & DEAKIN RESIDENTIAL SERVICES

📍 Princes Hwy, Warrnambool  
☎ 0417 125 861  
✉ wcadmin@deakin.edu.au  
🌐 www.deakin.edu.au

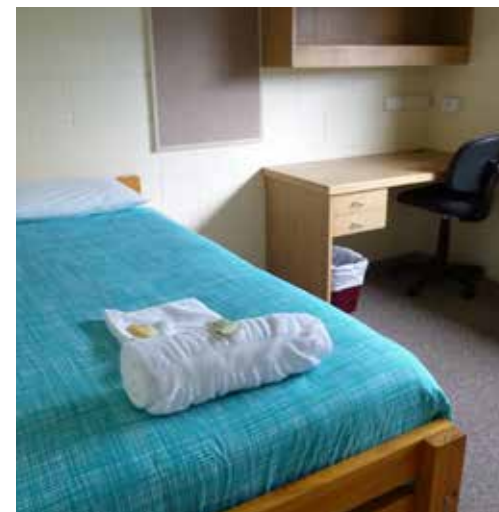
Deakin features all of the facilities that can assist in making your function or conference a success. With everything in the one place- accommodation, catering and social activities it really is a venue to suit all requirements.

ROOM	THEATRE
Percy Baxter Theatre	220
Alfred Deakin Theatre	150
Various Rooms	10-155

 /DeakinUniversity  deakinuniversity

**MAX PEOPLE:** 220

**KEY FEATURES:** AV, on site catering, recreational facilities, oval on site.





# THE EMMANUEL CENTRE

📍 Botanic Road, Warrnambool  
 ☎ 03 5560 0888  
 ✉ [rlenehan@emmanuel.vic.edu.au](mailto:rlenehan@emmanuel.vic.edu.au)  
 🌐 [www.emmanuel.vic.edu.au](http://www.emmanuel.vic.edu.au)

The Emmanuel Centre is the South West region's largest venue with an auditorium that seats 1,500. The Emmanuel Centre is a truly versatile multi-purpose facility that is perfect for a wide range of events, small or large. Retractable seating in the auditorium can be adjusted to cater for multiple uses for conference, events and exhibitions.

The Emmanuel Centre is a perfectly innovative space for functions, events, exhibitions and conferences consisting of the main large auditorium suitable for up to 1,500 people. The Centre also has several smaller meeting rooms fully equipped with comprehensive AV solutions.

ROOM	THEATRE (SEATING)	BANQUET (SEATING)	BANQUET (WITH DANCE FLOOR)	COCKTAIL (STANDING)
Midfield Auditorium	630 retractable 870 chairs	900	650	1500
Founders Mezzanine	170	120 round 160 rectangle	120 round 140 rectangle	200
Callaghan Foyer	110			150
Elizabeth Blackman Room	40	U Shape 20	Classroom style 30	
McKinnon Room	40	U shape 20	Classroom style 30	
Clayton Harrington Room	40	U shape 20	Classroom style 30	

**MAX PEOPLE:** 1,500

**KEY FEATURES:** Full accessibility facilities, state of the art AV including Wi Fi and wireless microphones.





# FLAGSTAFF HILL

89 Merri Street, Warrnambool  
 5559 4612  
 fshfunctions@warrnambool.vic.gov.au  
 www.flagstaffhill.com/functions

Flagstaff Maritime Museum and Village is the perfect setting for your next celebration! With historic buildings, fresh air and some of the best views in Warrnambool, Flagstaff Hill is guaranteed to satisfy and present any venue of your choice. Depending on the function size, a capacity from 30 to 300 can be arranged in any indoor or outdoor venue.

VENUE AREA	THEATRE SEATING	BANQUET SEATING	COCK- TAIL	MEETING SPACE	OUTDOOR EVENT SPACE STANDING	OTHER
Flagstaff – Ceremony Only	-	-	-	-	500	
Flagstaff – Marquee	300	250	300	250	-	
Mission to Seaman's Church	45					
The Wharf in front of the Steam Packet Inn	150	100	350			
The Village Green		200	300		350	
The Sailmaker's Loft	65	70	65	46		
Wharf Theatre	120	130	60	35		Concert 140
Theatrette	60	-	-	60		
Tearooms	30	40	55	25	70	
Steam Packet Inn	25	25	60	20		Concert 45

/flagstaffhillmaritimevillage
 flagstaffhill\_warrnambool

MAX PEOPLE: 500



# THE FLYING HORSE

📍 Princes Highway, Warrnambool  
 ☎ 0437 622 555  
 ✉ functions@theflyinghorse.com.au  
 🌐 www.theflyinghorse.com.au

The Flying Horse offers a variety of four function spaces along with an array of exciting features to ensure you and your guests enjoy a memorable experience at your next function. From an intimate boardroom for 20 people to the upstairs function room which holds up to 180 standing there is a space to suit all needs. The venue is modern and contemporary and features a courtesy bus- what's not to like?!

Room	Theatre Seating	Banquet Seating	Cocktail (standing)
Upstairs Private Function Room	120	100	200
Brewery Private Function Room	50	60	70
Lounge Private Function Room	-	70	100
Inva's Private Dining Room	30	36	40
Boardroom	-	12	-

f /flyinghorsewbool    📷 fhorseinsta

**MAX PEOPLE:** 200

**KEY FEATURES:** full on-site catering and bars, AV, courtesy bus, fully accessible, ample car parking



Great Ocean Road



# HOTEL WARRNAMBOOL

📍 185 Koroit Street, Warrnambool

☎ 03 5562 2377

✉ info@hotelwarrnambool.com.au

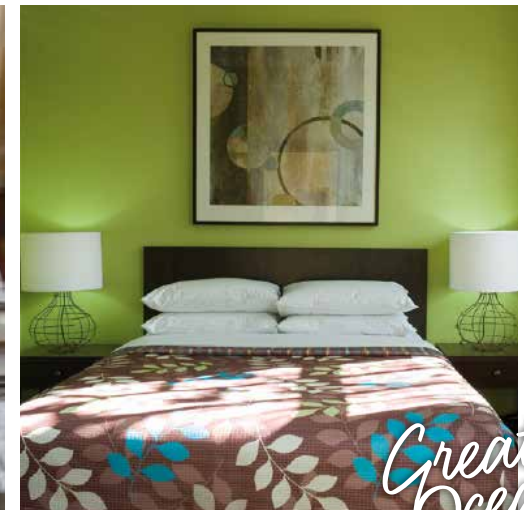
🌐 www.hotelwarrnambool.com.au

This inner city, boutique hotel is perfect for your conferences, special occasion, social gatherings and much more. With 12 rooms, off-site parking and free wi fi it's the perfect location to not only hold your function but dine and stay at.

ROOM	THEATRE	BANQUET	COCKTAIL
Ozone Room		120	Yes
Function Room	40	40	
Restaurant Area		80	Yes

📱 /hotelwarrnambool    📷 hotelwarrnambool

**KEY FEATURES:** Central location, bar restaurant and heated beer garden, iconic Warrnambool Hotel



# LADY BAY RESORT

2 Pertobe Road, Warrnambool  
 03 5562 1662  
 functions@ladybayresort.com.au  
 www.ladybayresort.com.au

Overlooking the beachfront of Warrnambool in Victoria's South-West, the Lady Bay Resort stands proud as a highly reputable venue that offers extensive services that will enable a memorable and successful event. Our venue has hosted many beautiful wedding receptions, corporate events and retreats, product launches, training seminars and private dinners.

ROOM	THEATRE	BANQUET (SEATING)	COCKTAIL (STANDING)
Function Room	250	200	200 75
Restaurant	-	200	150
Lounge	-	100	120

f /ladybayresort    @ladybayresort    LadyBayResort

**MAX PEOPLE:** 250

**KEY FEATURES:** Adjacent to beach, onsite accommodation, Day Spa on site.





# LIGHTHOUSE THEATRE

185 Timor Street, Warrnambool  
 03 5559 4886  
 akenneally@warrnambool.vic.gov.au  
 www.lighthouse theatre.com.au

The Lighthouse Theatre is a modern, centrally located multipurpose venue designed to accommodate any function from intimate functions through to large meetings and launches. The Lighthouse Foyer is perfect for a cocktail function featuring views of the Warrnambool CBD, whilst the Lighthouse Studio upstairs is ideal for intimate theatre with the seating down or a small conference or workshop.

ROOM:	THEATRE SEATING	BANQUET SEATING	COCKTAIL (STANDING)
Foyer			150
Theatre	584		
Lighthouse Studio	157 Theatre Seating	220	300
Meeting Room 1	60 Theatre Style	20	

/Lighthouse Theatre    lighthouse theatre

**MAX PEOPLE:** 584

**KEY FEATURES:** Perfectly located in CBD, on site bar and in house catering, full AV, fully accessible



# MID CITY WARRNAMBOOL

📍 525 Raglan Parade, Warrnambool

☎ 03 5562 3866

✉ events@themidcity.com.au

🌐 www.midcitywarrnambool.com.au

This contemporary motel and function centre is conveniently located near Warrnambool CBD and features a modern restaurant and business centre catering for all functions of up to 300 people. The function room has a full bar, AV installation, portable dancefloor and stage. The room can be separated into three smaller rooms each with own entrance.

ROOM	THEATRE	BANQUET	COCKTAIL
Full Function Room	250	200	300
Function Room 1	100	80	120
Function Room 2	50	40	70
Function Room 3	60	40	70

f /mcwarrnambool

📷 mcwarrnambool

**MAX PEOPLE:** 300

**KEY FEATURES:** Dancefloor, cocktail lounge, state of the art AV equipment, new ownership.





# QUEST WARRNAMBOOL

📍 15-19 Liebig Street, Warrnambool

☎ 03 5564 1200

✉ sales.warrnambool@questapartments.com.au

🌐 www.questapartments.com.au

Quest Warrnambool provides an environment perfectly suited for both formal and informal meetings. There are two spacious areas to choose from, and can be arranged to suit boardroom style meetings, interviews or to introduce display products. Situated ideally in Warrnambool CBD, Quest is the perfect location for meetings and presentations for up to 40 people.

ROOM	THEATRE	U SHAPE/ CLASSROOM	BOARD ROOM
Upstairs	50	25	25
Downstairs	30	20	20

Facebook: /Quest.Warrnambool Instagram: questwarrnambool

**MAX PEOPLE:** 50

**KEY FEATURES:** Complimentary car parking, central location, catering available, Wi Fi



# RAFFERTYS TAVERN

📍 1145 Raglan Parade, Warrnambool

☎ 03 5561 1888

✉ functions@raffertystavern.com.au

🌐 www.raffertystavern.com.au

The refurbished Raffertys Tavern offers a modern family bistro with a kids playroom, a sports bar with TAB, functions and cocktail bar and a comfortable outdoor beer garden. Big or small, stand up or sit down we cater to your needs and have the perfect space for any occasion! Whether it be work meetings, birthday celebrations or a cocktail function- contact Raffertys to discuss your needs.

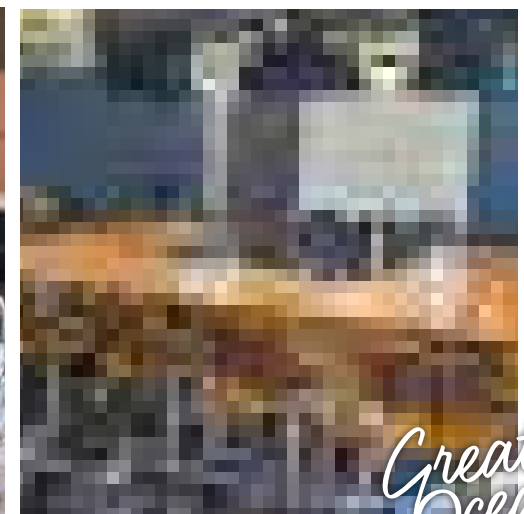
ROOM:	THEATRE SEATING	BANQUET SEATING	COCKTAIL (STANDING)
Middle Island Bar	150	100	250
Main Room Bistro	-	160	350
Near Play Room	-	130	200
Main Room Booth	-	70	150

f /RaffertysTavern

📷 raffertys.tavern

**MAX PEOPLE:** 350

**KEY FEATURES:** Kids party packages, all AV needs, dance floor, private bars in separate rooms, photo booth



Great Ocean Road



# REID OVAL SPORTS PAVILION

40 Cramer Street, Warrnambool  
 03 5559 4800  
 recreation@warrnambool.vic.gov.au  
 www.warrnambool.vic.gov.au/reid-oval-redevelopment

Reid Oval is the premier regional level facility providing sport and recreation opportunities for Warrnambool and the surrounding Great South Coast. The contemporary, split level facility features stunning views over the redeveloped oval and surrounding precinct.

Overlooking the oval, the social spaces maintain the visual connection to the playing field and enhance the appeal as an entertainment and/or function space.

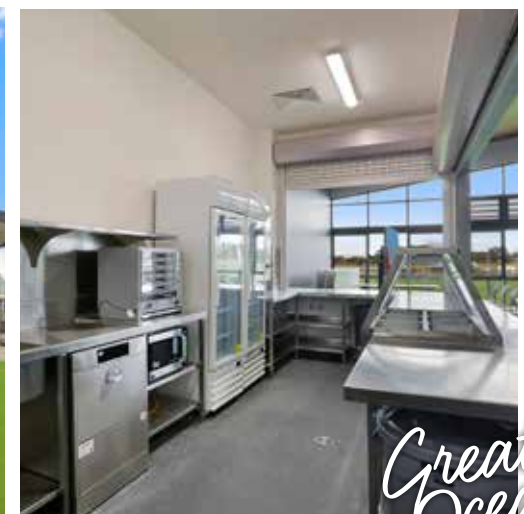
Two large social areas, around 100m<sup>2</sup> provide seating up to eighty guests or can be connected by means of an operable wall to cater for large groups, functions or conferences.

Dedicated commercial kitchens service each room with large preparation areas and storage.

ROOM:	SEATING	STANDING
Social Room 1	80	120
Social Room 2	80	120

**MAX PEOPLE:** 120

**KEY FEATURES:** 80 inch smart TV on trolley, PA system, public WIFI, ample site car parking



# THE STAGE - EMMANUEL COLLEGE

📍 1145 Raglan Parade, Warrnambool

☎ 03 5560 0888

✉ : [rlenehan@emmanuel.vic.edu.au](mailto:rlenehan@emmanuel.vic.edu.au)

🌐 : [www.emmanuel.vic.edu.au](http://www.emmanuel.vic.edu.au)

Located at Emmanuel College, The Stage is a dynamic, modern 236 seat theatre rich with multiple screening options, state of the art PA system and full catering options. The Stage is available for hire in the evenings, weekends and on school holidays.

ROOM:	THEATRE SEATING
Wyton Theatre	236

**MAX PEOPLE:** 236

**KEY FEATURES:** Full accessibility features including wheelchair access and multiple hearing options, thermostat controlled environment, state of the art AV, ample parking, Wifi.





# SIMONS WATERFRONT

📍 Level 1/80 Pertobe Road Warrnambool  
 ☎ 03 5562 1234  
 ✉ [functions@simonswaterfront.com.au](mailto:functions@simonswaterfront.com.au)  
 🌐 [www.simonswaterfront.com.au](http://www.simonswaterfront.com.au)

Simon's Waterfront Restaurant has magnificent ocean views across Lady Bay, is adjacent to the boardwalk and beach and situated close to Lake Pertobe. Simons can offer various catering options at both Simons and the Surf Club including morning and afternoon tea, working lunches, all day packages, weddings, formal dinners and cocktail functions.

ROOM	THEATRE	BANQUET	COCKTAIL
Simons Restaurant	140	100	160
Surf Club	230	200	250

f /simonswaterfront   
 📷 simonswaterfront

**MAX PEOPLE:** 250

**KEY FEATURES:** Ocean views, indoor & outdoor options, AV.



*Great Ocean Road*

# SOUTH WEST TAFE

📍 193/197-205 Timor Street, Warrnambool

☎ 1300 648 911

✉ events@swtafe.edu.au

🌐 www.swtafe.vic.edu.au

South West TAFE features modern facilities providing a stimulating environment in which to learn, train and communicate. TAFE is located centrally in Warrnambool's CBD, within walking distance to the train station, accommodation, law courts and restaurants and cafes. Parking is close by with ample accessible parking on site.

ROOM	THEATRE	BANQUET	COCKTAIL
Main Conference Room	100	60	140

f /swtafe    📷 swtafe

**MAX PEOPLE:** 140

**KEY FEATURES:** on site catering, recreational facilities, oval on site, full accessibility features, teleconference facilities, wireless network, hearing loops, central location.





# THE PAVILION

📍 50 Viaduct Road, Warrnambool

☎ 03 5561 1551

✉ jon@pavillion.net.au

🌐 www.pavillion.net.au

Directly overlooking the sea and the Warrnambool breakwater, The Pavilion Cafe and Bar is an amazing situated venue which holds weddings and celebrations for any client in need. The capacity of the venue can hold 120 seated (including deck) or 180 cocktail. With a top quality, fresh and local produce menu, The Pavilion Café Bar presents the perfect venue for any wedding or event which whom may need.

ROOM:	THEATRE SEATING	BANQUET SEATING	COCKTAIL (STANDING)
La Bella Room	60	50	100
Café Upstairs	-	100	180

📱 /Pavilion3280    📷 @pavilioncafebar

**MAX PEOPLE:** 180

**KEY FEATURES:** Spectacular beachside location, ample parking, modern & contemporary space



*Great Ocean Road*

# THE WHALERS HOTEL

53 Liebig Street, Warrnambool  
 0438 620 636  
 admin@thewhalershotel.com.au  
 www.thewhalershotel.com.au

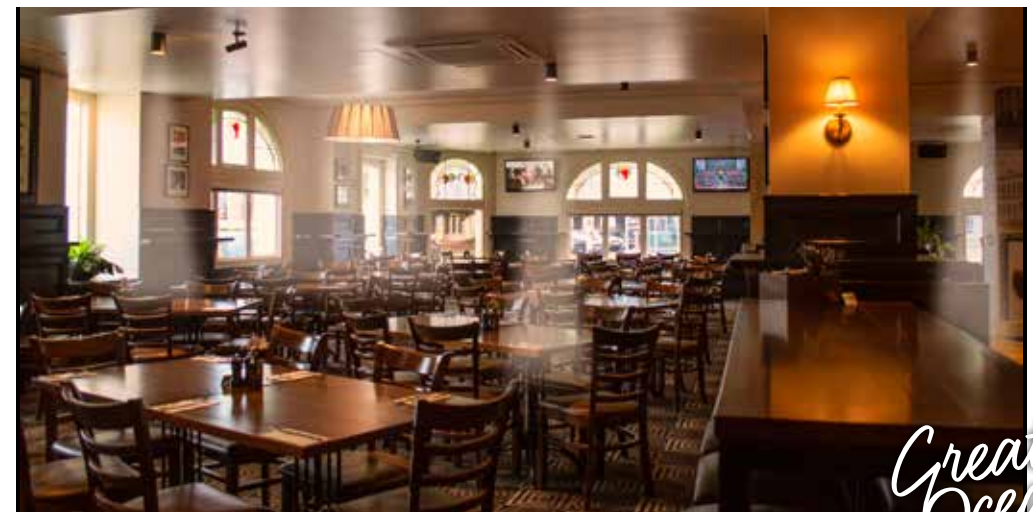
The Whalers Hotel is a stylish, modern and sophisticated venue for all types of functions. Located right in the heart of Warrnambool CBD there is a function package to suit all occasions from small business meetings to stand up cocktail celebrations. The Whalers has recently been renovated and features a modern menu to compliment the venue.

ROOM:	THEATRE SEATING	BANQUET SEATING	COCKTAIL (STANDING)
Crammond and Dickson Room	80	60	300
Dining Room	120	80	300

/thewhalershotel   thewhalershotel

**MAX PEOPLE:** 300

**KEY FEATURES:** 3am license, outdoor skydeck, sophisticated AV, CBD location





# WARRNAMBOOL ART GALLERY

📍 26 Liebig Street, Warrnambool

☎ 03 5559 4949

✉ gallery@warrnambool.vic.gov.au

🌐 www.thewag.com.au

The Warrnambool Art Gallery is located perfectly in the CBD of Warrnambool, adjacent to the Civic Green. Featuring full catering and options to BYO it presents as a great option to hold your special occasion or function.

ROOM	THEATRE	BANQUET	COCKTAIL
Temporary Gallery		80	120
Permanent Collection Gallery		80	150

f /Warrnambool Art Gallery    📷 warrnamboolartgallery

**MAX PEOPLE:** 150

**KEY FEATURES:** Great CBD location, vibrant space, kitchen on site





# WARRNAMBOOL BOWLS CLUB

75 Timor Street, Warrnambool  
 03 5561 4586  
 manager@warrnamboolbowls.com.au  
 www.warrnamboolbowls.com.au

There is something to suit everyone at Warrnambool Bowls Club. From small groups to weddings and formal events, we can tailor a package to suit your needs. The boardroom features a large wooden table for up to 12 whilst the bistro comfortably caters for 70 seated and 220 standing.

ROOM	THEATRE	BANQUET	COCKTAIL
Merri	220	160	250
Small Conference	40	60	80
Alfresco		40	60
Board Room	12		

/warrnamboolbowls
 warrnamboolbowls

**MAX PEOPLE:** 220

**KEY FEATURES:** Access to bowling green with heated alfresco area, central location, wheelchair accessible



# WARRNAMBOOL FOOTBALL CLUB

📍 42 Cramer Street, Warrnambool  
 ☎ 03 5562 3600  
 ✉ admin@warrnamboolfc.com.au  
 🌐 www.warrnamboolfc.com.au

Your function is guaranteed to be a success when you choose the Warrnambool Football Club function centre. Catering for all types and sizes including weddings, birthdays, work functions, conferences, seminars and Christmas parties. Personalised service eliminates the worry of planning your event as everything is taken care of by professional experienced organisers. The versatility of our function areas enables us to tailor functions and catering to suit your ever need.

ROOM	THEATRE (SEATING)	BANQUET (SEATING)	COCKTAIL (STANDING)
Oval Room	220	200	250
Cedar Room	90	80	90
Function Room (Upstairs)	80	60	80
Cramers Bistro & Bar	80	80	100

📌 /Warrnambool Football Netball Club  
 📷 @wfccramersbistro  
 🐦 @WFNC Blues

**MAX PEOPLE:** 250

**KEY FEATURES:** On-site catering, AV, great facilities, ample parking





# WARRNAMBOOL GOLF CLUB

📍 Younger Street, Warrnambool

☎ 03 5562 2108

✉ peter@wgcinc.com.au

🌐 www.qginc.com.au

The Warrnambool Golf Club function room is available for hire for a variety of activities at competitive rates. Our helpful staff can give assistance in planning all events. Whether it is a wedding, small meeting, seminar, exhibition or corporate function get in touch with us to discuss your requirements.

ROOM	THEATRE (SEATING)	BANQUET (SEATING)	COCKTAIL (STANDING)
Function Room	150	150	400

📱 /warrnamboolgolfclub 📷 Warrnambool

**MAX PEOPLE:** 400

**KEY FEATURES:** Ample on-site parking, AV, on site bar and catering, dance floor and stage



*Great Ocean Road*



# WARRNAMBOOL GREYHOUND RACING CLUB- WANNON FUNCTION CENTRE

📍 Warrnambool Showgrounds, 331 Koroit Street, Warrnambool

☎ 03 5561 2766

✉ Warrnambool@grv.org.au

🌐 www.warrnambool.grv.org.au

The fully refurbished Wannon Function Centre is ideal for conferences, exhibitions, seminars or private functions. It has full catering and bar facilities on site and all of the extra features to make your event seamless- AV, stage, Free Wi Fi and ample car parking.

ROOM	THEATRE (SEATING)	BANQUET (SEATING)	COCKTAIL (STANDING)
Wannon Room	250	170	300
Stan Lake Room	450	300	500

 /Warrnambool Greyhound Racing Club- Wannon Rooms Function Centre

 wannonfunction

**MAX PEOPLE:** 500

**KEY FEATURES:** Located conveniently close to CBD, ample parking, full refurbished facility



# WARRNAMBOOL RACING CLUB

📍 2-64 Grafton Road, Warrnambool

☎ 03 5562 2211

✉ Warrnambool@countryracing.com.au

🌐 www.warrnamboolracing.com.au

The Warrnambool Racing Club has three high quality and sort-after venues that are perfect for birthdays, weddings, work functions or any social gathering. Whether your function consists of hosting a gala event with all the trimmings or a small intimate gathering, our venues present differences- and the perfect location for your event. Contact us today to help bring your celebration to life!

ROOM	THEATRE	BANQUET	COCKTAIL
Matilda Room	300	250	300
Public Dining Room	300	200	300
Woodford Lounge	100	60	100

f /warrnamboolracing

📷 warrnamboolracing

**MAX PEOPLE:** 300

**KEY FEATURES:** Modern and spacious facilities, full catering offered, racecourse views, BYO in public dining room





# WARRNAMBOOL STADIUM

71-77 Caramut Road, Warrnambool  
 5559 4555  
 rsanderson@warrnambool.vic.gov.au  
 www.warrnambool.vic.gov.au/Warrnambool-stadium

The Warrnambool Stadium is a modern facility that provides equitable access to a range of sport and recreation groups. The stadium offers in excess of 2,500 square metres of floor space and is available for hire to use at expos, youth events, dance workshops, sports tournaments and concerts.

ROOM:	THEATRE SEATING	BANQUET SEATING	COCKTAIL (STANDING)
Ballroom	250	200	400
Meeting Room 2	30	30	40

f /wboolstadium

**MAX PEOPLE:** 400

**KEY FEATURES:** BYO available, full commercial kitchen on site, Wi Fi, ample on site parking





# SPORTS GROUNDS AND FACILITIES

Warrnambool has a range of sporting grounds and facilities available for hire, many of these grounds have social rooms that may be utilised for functions.



**For further information about the sports grounds and facilities in Warrnambool**  
[www.warrnambool.vic.gov.au/sports-grounds-and-facilities](http://www.warrnambool.vic.gov.au/sports-grounds-and-facilities)

- Allansford Recreation Reserve
- Brierly Reserve
- Bushfield Recreation Reserve
- Davidson Oval
- Dennington Recreation Reserve
- Friendly Societies Park
- Harris Street Reserve
- Hughes Oval- Deakin University
- Jetty Flat Reserve
- Jones Oval
- Mack Oval
- Merrivale Recreation Reserve
- Reid Oval
- Walter Oval
- Warrnambool Hockey Complex



*Great  
Ocean  
Road*

This guide was produced by Warrnambool City Council Events Team.  
We look forward to assisting you with hosting your event in Warrnambool.

---



📍 89 Merri Street Warrnambool  
✉ [events@warrnambool.vic.gov.au](mailto:events@warrnambool.vic.gov.au)  
🌐 [www.warrnambool.vic.gov.au/events](http://www.warrnambool.vic.gov.au/events)