



WARRNAMBOOL
CITY COUNCIL

REVEGETATION POLICY

POLICY TYPE: ORGANISATIONAL

APPROVAL DATE: 6 September 2021

REVIEW DATE: 6 September 2024

DOCUMENT CONTROL

Document Title:	<i>Revegetation Policy</i>
Policy Type:	<i>Organisational</i>
Responsible Branch:	<i>City Strategy and Development</i>
Responsible Officer:	<i>Manager of City Strategy and Development</i>
Document Status:	<i>Adopted</i>
Approved By:	<i>Council</i>
Adopted Date:	<i>6 September 2021</i>
Review Date:	<i>6 September 2024</i>

TABLE OF CONTENTS

1. INTRODUCTION	4
1.1. Purpose	4
1.2. Scope	4
1.3. Definitions	4
1.4. References	4
2. POLICY	5
2.1. Policy Statement	5
<i>2.1.1. Policy Principles</i>	5
3. GOVERNANCE	6
3.1. Owner	6
3.2. Review	6
3.3. Compliance Responsibility	6
<i>3.3.1. Management Executive Group (Chief Executive and Directors)</i>	6
<i>3.3.2. Managers and Supervisors</i>	6
<i>3.3.3. All Employees</i>	6
3.4. Charter of Human Rights Compliance	6

1. INTRODUCTION

1.1. Purpose

The purpose of this policy is to ensure a consistent approach to the planning and management of revegetation sites within the Warrnambool City Council area and to encourage the planting of local indigenous species in the open space network to improve the regional landscape.

1.2. Scope

This policy applies to Council in all its operations and functions relating to native vegetation revegetation along with local volunteer groups revegetating areas of Council owned or managed land. This policy does not apply to amenity or landscape planting.

1.3. Definitions

Term	Definition
MOU	Memorandum of Understanding
Revegetation	The improvement of habitat value of existing remnant/native vegetation. This may occur through actions such as weed control, grazing exclusion, or reintroduction of missing indigenous vegetation elements.
The Guidelines	Warrnambool Revegetation Guidelines – Guidelines for Council owned and managed land and checklist for applicants

1.4. References

Warrnambool Coastal Management Plan, 2014

Warrnambool Coast Vegetation Management Plan, 2012

Warrnambool Open Space Strategy, 2014

Green Warrnambool, 2018

Warrnambool Revegetation Guidelines – Guidelines for Council Owned and Managed Land and Checklist for Applicants

South of Merri Open Space Precinct Plan, 2020

Biodiversity 2037, Victoria, 2018

Approved Conservation Advice (including Listing Advice) for the Assemblages of species associated with open-coast salt-wedge estuaries of western and central Victoria ecological community, Australian Government 2018

Merri River Landscaping Guidelines, 2020

Glenelg Hopkins Catchment Management Authority Waterway Strategy 2014-22

Glenelg Hopkins Catchment Management Authority Regional Catchment Strategy 2013-19 (new version currently in development)

2. POLICY

This policy provides a consistent approach to revegetation projects carried out by both the Council and volunteer groups on Council owned and managed land. The policy also ensures projects align with Council's strategic requirements, comply with all relevant policy, legislation or regulatory standards. It is the role of Council to ensure that any changes to the community's assets are safe and consider any interconnected infrastructure

2.1. Policy Statement

The objective of the policy is to encourage the revegetation of native vegetation within the Warrnambool Council open space network and provide a consistent approach to these projects.

2.1.1. Policy Principles

- Revegetation projects should be carried out within areas classified as 'very high' or 'high' as depicted in the Revegetation Priority Map (RRPM) at Appendix 1.
Note: All open spaces of Warrnambool have been prioritised for revegetation and restoration based on a biodiversity principle, the RRPM is a result of this process.
- Indigenous species are to be planted in and adjoining open spaces where the primary function has been identified as conservation, unless there is a significant cultural or heritage reason otherwise.
- Planting or seeding must be carried out with reference to the EVC for the proposed area. EVC benchmarks contain a subset of typical species for each EVC in a bioregion. It should be noted that the benchmark does not contain a comprehensive list of species and not all species in the benchmark will be appropriate to all sites across the range of an EVC in a bioregion, nor readily available through local nurseries.
- Coast revegetation planting must be carried out with reference to the EVC for the proposed area outlined in the Warrnambool Coast Vegetation Management Plan 2012.
- Planning for revegetation works must be carried out in advance to allow for the collection of seed and/or propagation of indigenous plants.
- All revegetation works must take into account other considerations for a site, such as its values as public open space for passive recreation purposes. Plantings should be suitable for both the environment and co-existing uses.
- All revegetation works must be assessed for their suitability, particularly in relation to plant species, taking into consideration the use of the site and adjacent land. Plantings must be assessed for safety and their impact on maintenance.
- A revegetation plan must be prepared and submitted to Council for approval by Council prior to works commencing.
- A Memorandum of Understanding (MOU) between the proponent and the Council must be obtained prior to the implementation of an approved revegetation plan.
- Sites must be managed by the proponent for three years following the implementation of the Memorandum of Understanding.
- Maintenance of all sites may be handed over to the Council by the proponent at the cessation of the Memorandum of Understanding. Council must conduct a final site check with the proponent on site after the cessation of the MOU.

3. GOVERNANCE

3.1. Owner

The management of this Policy sits with the Manager of City Strategy and Development

3.2. Review

The Manager of City Strategy and Development will review the policy for any necessary amendments no later than 3 years after its formulation or after the last review.

3.3. Compliance Responsibility

3.3.1. Management Executive Group (Chief Executive and Directors)

Demonstrate Warrnambool City Council values through being positive role models for this policy

3.3.2. Managers and Supervisors

Managers and Supervisors are responsible for ensuring employees under their direct control comply with actions detailed in this policy (and related guidelines).

3.3.3. All Employees

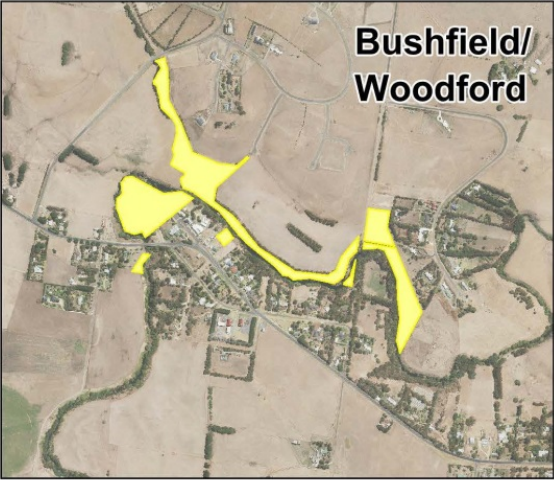
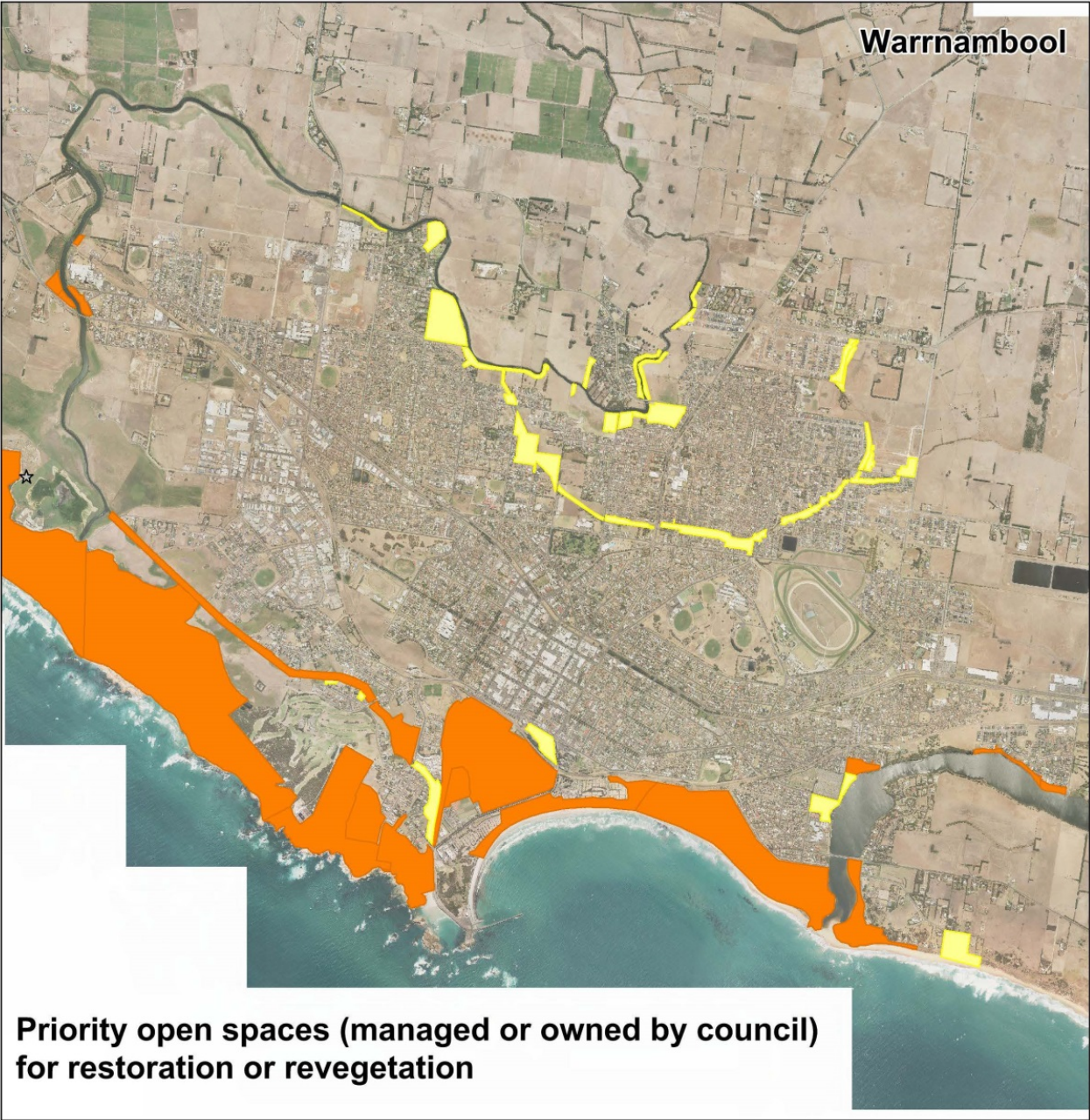
Demonstrate Warrnambool City Council values through being positive role models for fellow employees, contractors and volunteers by ensuring compliance with this policy (and The Guidelines).

3.4. Charter of Human Rights Compliance

It is considered that this policy does not impact negatively on any rights identified in the Charter of Human Rights Act (2007).

Warrnambool City Council is committed to consultation and cooperation between management and employees. The Council will formally involve elected employee health and safety representatives in any workplace change that may affect the health and safety of any of its employees.

APPENDIX 1: REVEGETATION PRIORITY MAP FOR OPEN SPACES



Priority open space sites
For restoration or revegetation (based on on biodiversity value)

	Very high
	High