

Brierly Sports & Community Hub



The ask: **Critical social infrastructure for a growing community**

North-east Warrnambool is the fastest growing residential zone in Warrnambool, the largest Victorian coastal city outside Port Phillip Bay.

At the heart of this precinct is the Brierly Recreation Reserve, a 12ha parcel of open land used for information recreation and organised sport.

The Brierly Reserve Master Plan identified the need for investment in sporting fields and built infrastructure including a Sports and Community Hub to serve the community in the expanding northern corridor of Warrnambool.

An accessible Hub is urgently needed to provide amenities and changerooms for resident sports clubs and up to 30 community organisations and programs.

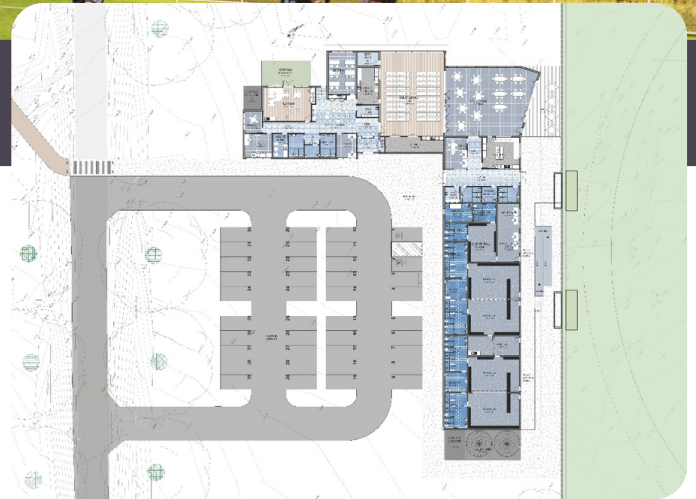
Council would make a substantial contribution to the project and the proposed funding model comprises:

- \$7.5 million – Australian Government (Council has applied to the Growing Regions Program)
- \$4 million – Victorian Government
- \$3.5 million – Warrnambool City Council

A business case completed in late 2024 found the hub would deliver a positive benefit-to-cost ratio of 1.8.

Already Brierly's Eastern Oval has undergone a \$2 million redevelopment with support of \$1 million in Victorian Government funding. The oval now features a high quality playing surface, new cricket wicket, two soccer pitches, competition standard lighting, fencing and player/coach boxes.

Sports participants at Brierly Reserve are currently using transportable changerooms and toilets.



The vision

Extensive consultation in 2024 revealed the community wanted to see a Hub that offered the following key features:

- a flexible multi-purpose hall for hire;
- changerooms and social facilities for sporting clubs that create a female-friendly environment;
- community meeting rooms;
- adequate parking; and,
- a safe and inclusive space for parents and carers to meet with babies and toddlers.

Benefits of a community hub

- Greater connections between community and local service providers.
- Increased community engagement and participation.
- The inclusion of a Changing Places bathroom means people with complex needs have better opportunities to participate in indoor group activities.
- Builds community and social networks in the fast-growing northern suburbs.
- Increases participation in physical and social activities for people of all ages.

Contact

Andrew Mason
Chief Executive Officer
Warrnambool City Council

✉ amason@warrnambool.vic.gov.au
☎ 5559 4800