



# LIFE IN AUSTRALIA 2018

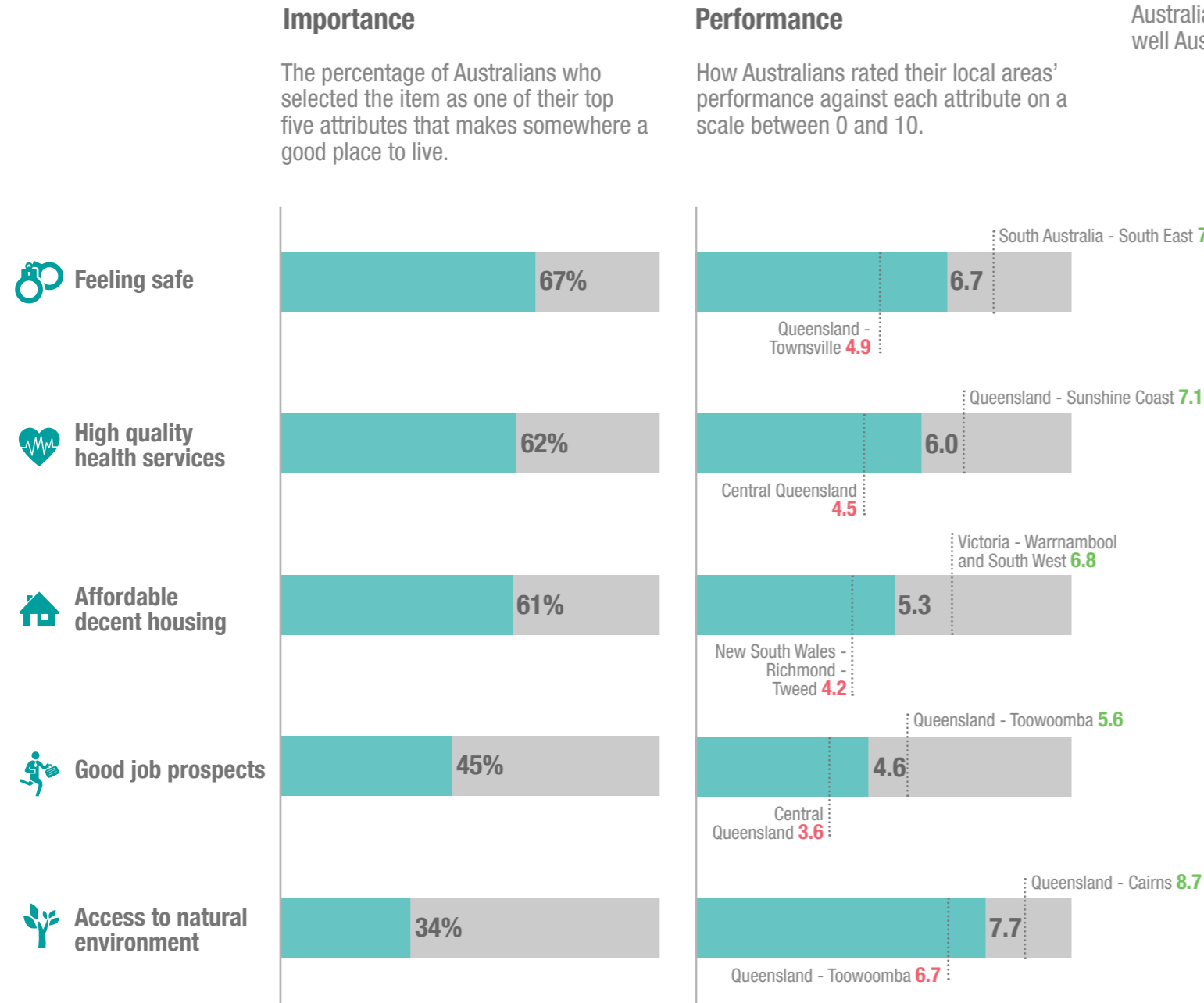
Understanding liveability across regional Australia

**Daniel Evans**  
Deputy Managing Director  
✉ dan.evans@ipsos.com  
☎ (03) 9946 0850

**Lucy Hedt**  
Senior Research Manager  
✉ lucy.hedt@ipsos.com  
☎ (03) 9946 0832

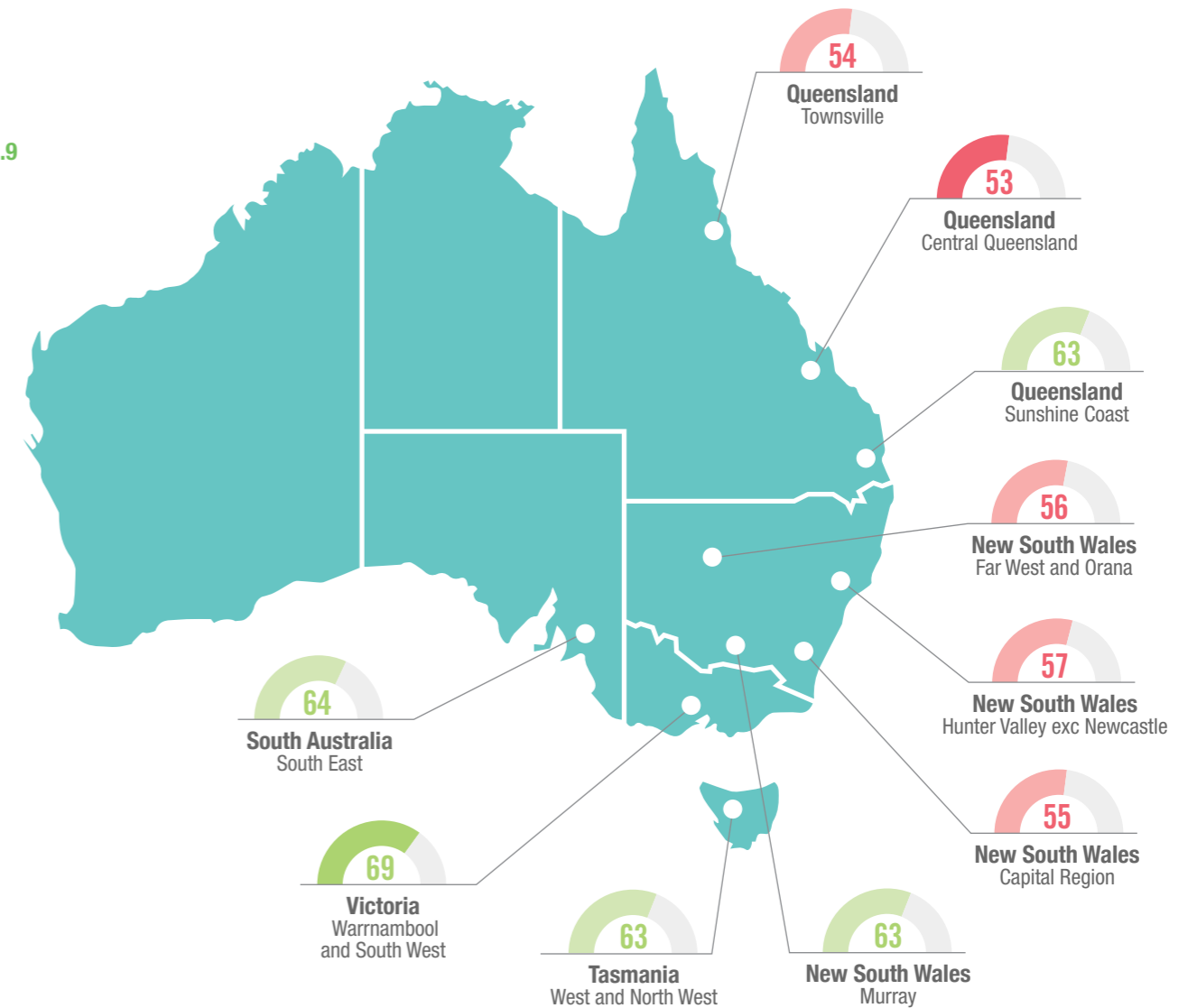


## The top five attributes that make somewhere a good place to live



## The most and least liveable areas across regional Australia

The most and least liveable areas are drawn from the Regional Australia Liveability Index – a measure of regional Australia's liveability between 0 and 100. The Index is created by multiplying each attributes' importance by how well Australians rate its performance in their local area. The areas shown on the map are ABS SA4 Regions.



## About Life in Australia 2018

The Understanding liveability across regional Australia report is drawn from the Ipsos Life in Australia project – the nation's largest annual study of community values and liveability. Life in Australia is a citizen-centric approach to understanding liveability. In October 2018, we asked 9,515 Australians to select the top five attributes that they believe makes somewhere a good place to live. We also asked them to rate how well their local area performed on a scale between 0 and 10 across 16 liveability attributes. Regional Australia's 10 most liveable regions are shown on the next page. Pages 3 and 4 show regional Australia's less and least liveable regions.



# LIFE IN AUSTRALIA 2018

Understanding liveability across regional Australia

**Daniel Evans**  
Deputy Managing Director  
✉ dan.evans@ipsos.com  
☎ (03) 9946 0850

**Lucy Hedt**  
Senior Research Manager  
✉ lucy.hedt@ipsos.com  
☎ (03) 9946 0832



	Regional Australia Liveability Index	Feeling safe (67%)	High quality health services (62%)	Affordable decent housing (61%)	Good job prospects (45%)	Access to the natural environment (34%)	A strong sense of community (30%)	High quality education opportunities (30%)	A prosperous economy (26%)	Opportunity for all (26%)	Reliable & efficient public transport (25%)	Social cohesion (22%)	Connectivity (22%)	Shopping, leisure & dining (19%)	A lack of road congestion (17%)	Viewing and participating in sports & recreation (7%)	Museums, galleries & festivals (6%)
Regional Australia	59.3	6.7	6.0	5.3	4.6	7.7	6.6	6.1	5.3	5.5	4.5	6.1	6.0	5.9	6.5	6.9	5.2

## Regional Australia's 10 Most Liveable Regions

	Regional Australia Liveability Index	Feeling safe (67%)	High quality health services (62%)	Affordable decent housing (61%)	Good job prospects (45%)	Access to the natural environment (34%)	A strong sense of community (30%)	High quality education opportunities (30%)	A prosperous economy (26%)	Opportunity for all (26%)	Reliable & efficient public transport (25%)	Social cohesion (22%)	Connectivity (22%)	Shopping, leisure & dining (19%)	A lack of road congestion (17%)	Viewing and participating in sports & recreation (7%)	Museums, galleries & festivals (6%)
<b>1</b> Victoria - Warrnambool & South West	68.7	7.5	7.0	6.8	5.2	8.6	7.6	6.9	6.1	6.4	5.0	7.1	7.6	6.2	8.0	7.7	5.5
<b>2</b> South Australia - South East	63.9	7.9	6.2	6.7	4.2	8.6	7.4	5.8	5.5	5.9	3.2	6.5	6.6	5.6	7.9	7.5	5.1
<b>3</b> New South Wales - Murray	63.5	7.0	6.6	6.0	5.2	7.2	6.7	6.7	5.5	6.2	4.5	6.5	6.7	6.1	7.7	7.9	5.4
<b>4</b> Queensland - Sunshine Coast	63.2	7.4	7.1	4.6	5.2	8.4	6.9	6.8	6.3	5.9	4.9	6.2	5.8	6.8	5.4	7.1	5.3
<b>5</b> Tasmania - West & North West	63.2	7.6	5.4	6.3	5.0	8.4	7.3	5.8	5.6	5.8	4.6	6.7	6.4	5.4	8.3	6.7	5.1
<b>6</b> Victoria - Ballarat	62.6	6.5	6.9	5.8	5.0	7.5	6.6	6.6	5.4	5.8	5.4	6.4	6.6	6.4	6.4	7.1	6.3
<b>7</b> Queensland - Toowoomba	62.4	6.1	6.6	5.8	5.6	6.7	6.4	7.0	6.0	6.2	4.9	6.5	6.5	6.9	6.7	6.8	6.3
<b>8</b> Victoria - North West	62.2	7.3	6.3	5.6	4.8	7.7	7.0	6.1	5.3	6.0	4.3	6.3	6.4	5.6	7.9	7.2	5.4
<b>9</b> Queensland - Cairns	62.1	6.4	6.1	5.7	5.1	8.7	6.9	6.7	5.8	5.6	4.6	6.3	6.4	6.5	6.8	6.7	5.8
<b>10</b> Queensland - Moreton Bay - South	62.0	6.7	7.0	5.1	5.3	7.6	6.4	6.7	5.7	6.1	5.5	6.7	5.9	7.2	4.2	7.0	5.3

■ Above Average ■ Below Average



# LIFE IN AUSTRALIA 2018

## Liveability across regional Australia

**Daniel Evans**  
 Deputy Managing Director  
 dan.evans@ipsos.com  
 (03) 9946 0850

**Lucy Hedt**  
 Senior Research Manager  
 lucy.hedt@ipsos.com  
 (03) 9946 0832



	Regional Australia Liveability Index	Feeling safe	High quality health services	Affordable decent housing	Good job prospects	Access to the natural environment	A strong sense of community	High quality education opportunities	A prosperous economy	Opportunity for all	Reliable & efficient public transport	Social cohesion	Connectivity	Shopping, leisure & dining	A lack of road congestion	Viewing and participating in sports & recreation	Museums, galleries & festivals
<b>11</b> New South Wales - Riverina	62.0	7.1	6.0	5.8	4.9	7.1	7.3	6.4	5.8	5.8	4.3	6.6	6.6	5.6	7.5	6.9	5.6
<b>12</b> Victoria - Bendigo	61.4	6.7	6.4	5.2	5.1	7.3	6.8	6.5	5.7	5.4	5.7	6.1	6.5	5.8	6.7	7.4	6.5
<b>13</b> Queensland - Gold Coast	61.2	6.5	6.9	5.1	5.1	7.9	6.0	6.7	5.9	6.0	5.1	6.1	5.7	7.4	4.4	7.1	5.4
<b>14</b> Victoria - Shepparton	60.9	6.6	5.8	5.4	4.8	8.0	7.0	6.1	5.0	5.8	5.0	6.6	6.8	5.9	7.5	7.3	5.5
<b>15</b> Tasmania - Launceston & North East	60.9	7.2	5.4	6.1	4.6	7.9	6.7	5.9	5.7	5.6	5.0	6.2	6.3	5.0	7.3	6.3	5.9
<b>16</b> Queensland - Darling Downs - Maranoa	60.8	7.4	5.7	6.4	4.1	7.3	7.2	6.4	5.5	6.0	3.2	6.7	6.1	5.1	7.2	6.5	5.2
<b>17</b> New South Wales - Southern Highlands & Shoalhaven	60.1	7.1	5.9	5.1	4.5	8.4	7.0	6.0	5.8	5.7	4.3	6.5	6.0	5.4	6.4	6.4	4.9
<b>18</b> Victoria - Geelong	60.1	6.2	6.4	5.1	4.6	8.1	6.6	6.6	5.5	5.7	4.9	6.1	6.3	6.6	6.0	7.3	6.0
<b>19</b> New South Wales - Coffs Harbour - Grafton	59.8	7.1	6.5	5.0	4.1	8.7	6.5	6.3	5.1	5.2	4.1	6.1	5.7	6.2	6.4	7.4	5.2
<b>20</b> Queensland - Mackay - Isaac - Whitsunday	59.7	6.7	5.6	4.4	5.5	8.3	6.8	6.0	6.3	5.9	4.8	6.5	6.2	5.5	6.8	6.5	4.7
<b>21</b> Western Australia - Mandurah	59.5	6.1	5.9	6.3	4.3	7.8	6.2	5.7	5.3	5.0	6.2	5.7	6.3	6.2	6.7	6.9	5.4
<b>22</b> Victoria - Latrobe - Gippsland	59.3	6.9	5.8	5.7	4.5	7.8	6.9	5.8	5.0	5.3	4.2	6.2	5.9	5.3	6.9	7.2	5.0
<b>23</b> Western Australia - Bunbury	59.0	6.7	6.3	5.1	4.5	8.0	6.5	5.9	4.8	5.6	4.3	6.0	5.9	5.4	7.1	6.9	5.0
<b>24</b> New South Wales - Central Coast	58.9	6.8	6.0	5.1	4.4	8.0	6.2	6.0	5.5	5.5	5.3	6.0	5.9	6.4	5.3	6.6	4.9
<b>25</b> South Australia - Outback	58.6	6.9	5.6	6.1	4.7	7.6	6.2	5.1	4.9	5.4	4.6	5.5	6.2	5.3	6.8	7.0	5.0
<b>26</b> Queensland - Moreton Bay - North	58.6	6.2	6.0	5.4	4.8	7.4	6.4	5.9	5.3	5.6	5.8	6.0	5.9	6.0	5.5	6.6	5.3

■ Above Average ■ Below Average



# LIFE IN AUSTRALIA 2018

## Liveability across regional Australia

**Daniel Evans**  
Deputy Managing Director  
✉ dan.evans@ipsos.com  
☎ (03) 9946 0850

**Lucy Hedt**  
Senior Research Manager  
✉ lucy.hedt@ipsos.com  
☎ (03) 9946 0832



	Regional Australia Liveability Index	Feeling safe	High quality health services	Affordable decent housing	Good job prospects	Access to the natural environment	A strong sense of community	High quality education opportunities	A prosperous economy	Opportunity for all	Reliable & efficient public transport	Social cohesion	Connectivity	Shopping, leisure & dining	A lack of road congestion	Viewing and participating in sports & recreation	Museums, galleries & festivals	
27	New South Wales - Illawarra	58.5	6.4	6.0	4.3	4.4	8.1	6.5	6.7	5.1	5.5	5.3	6.0	6.3	6.6	5.9	7.0	5.1
28	Queensland - Wide Bay	58.2	6.8	5.6	6.3	3.8	7.4	6.4	5.7	4.7	5.2	4.4	5.8	6.2	5.4	7.1	6.6	4.9
29	New South Wales - Newcastle & Lake Macquarie	58.0	6.3	6.3	4.7	5.0	7.6	6.0	6.2	5.4	5.4	4.6	5.6	5.9	6.5	5.6	6.6	5.4
30	Western Australia - Outback (South)	57.4	5.9	5.5	5.4	4.9	7.2	6.4	5.6	5.7	5.6	4.5	5.9	6.6	4.9	7.2	6.8	5.2
31	New South Wales - Mid North Coast	57.4	6.9	5.7	5.1	3.7	8.1	6.6	5.9	5.0	5.2	4.2	5.8	5.8	5.4	7.0	6.6	4.6
32	Victoria - Hume	57.4	6.6	6.1	5.2	4.1	7.7	6.6	5.6	4.8	5.4	3.8	5.9	5.8	5.0	7.1	7.0	4.8
33	New South Wales - New England & North West	57.3	6.4	5.4	5.7	4.9	7.4	6.5	6.0	5.4	5.2	3.5	5.8	5.4	5.0	7.0	7.4	5.0
34	South Australia - Barossa - Yorke - Mid North	57.2	7.5	5.3	5.7	3.9	7.2	6.9	5.4	5.1	5.2	2.6	5.5	6.0	5.0	7.5	7.2	4.5
35	New South Wales - Central West	57.0	6.7	5.5	5.5	4.4	6.8	6.7	6.1	5.0	5.3	3.8	5.7	5.6	4.6	7.6	6.9	4.8
36	Western Australia - Wheat Belt	56.8	6.5	6.0	5.4	4.4	7.7	6.3	5.9	4.5	5.0	3.4	6.2	5.6	4.5	7.0	6.8	4.9
37	New South Wales - Richmond - Tweed	56.6	6.6	6.0	4.2	4.2	8.3	6.5	5.8	5.1	5.0	3.8	6.1	5.5	5.7	6.9	6.6	5.1
38	New South Wales - Hunter Valley exc Newcastle	56.4	6.5	5.3	4.9	4.4	7.8	6.5	5.4	5.4	5.4	4.3	5.4	5.7	5.6	6.6	6.8	5.2
39	New South Wales - Far West & Orana	55.7	6.1	5.0	5.4	5.1	6.8	6.5	5.4	4.8	6.0	3.9	6.0	5.9	4.6	6.8	6.1	5.0
40	New South Wales - Capital Region	55.3	7.2	5.2	4.5	4.0	7.5	7.0	5.3	4.9	4.9	3.0	6.0	5.8	4.4	7.3	6.3	4.3
41	Queensland - Townsville	53.6	4.9	5.7	5.4	4.0	7.4	5.9	6.0	4.1	4.8	3.7	5.3	5.7	6.0	6.6	6.8	5.6
42	Queensland - Central Queensland	53.3	6.3	4.5	5.7	3.6	7.3	6.1	5.4	4.4	4.4	3.8	6.3	5.3	4.6	7.3	5.8	4.7

■ Above Average ■ Below Average